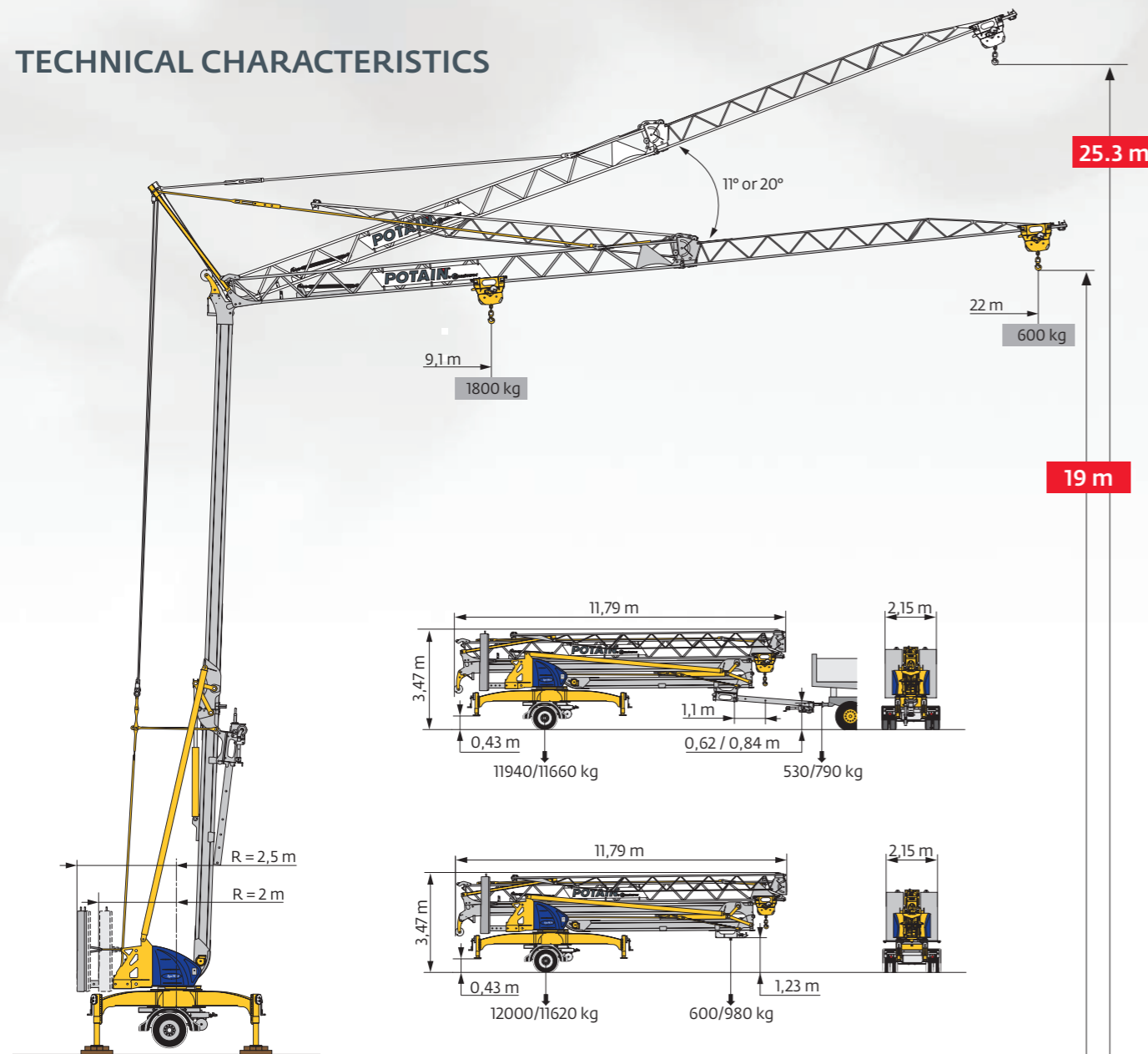


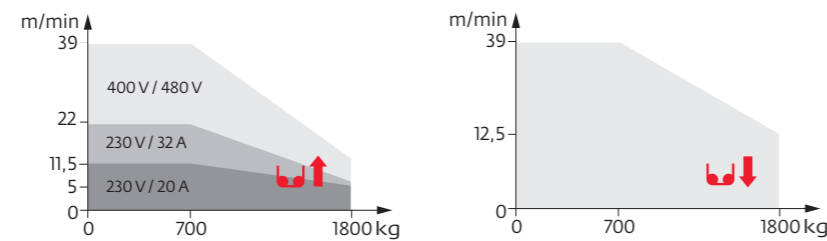
## TECHNICAL CHARACTERISTICS



CE EN 14439 C50-D50  
EN 14439 C25-D25  
FEM 1.001-A3

## HOISTING WINCH LVF OPTIMA

230 V / 20 A    230 V / 32 A    400 V / 480 V



Dardilly, France  
Tel: +33 (0)4 72 18 20 20  
Fax: +33 (0)4 72 18 20 00

© 2022 The Manitowoc Company Inc.  
02BR\_IGOM14\_042023\_EN  
www.manitowoc.com

This document is non-contractual. Constant improvement and engineering progress make it necessary that we reserve the right to make specification, equipment, and price changes without notice. Illustrations shown are subject to modification and may include optional equipment and accessories, or may not include all standard equipment.

▶ Watch the video  
Igo M 14



# POTAIN®

## Igo M 14

The Best in Class





# ADVANTAGES OF POTAIN ...

**1** ADJUSTABLE BRAKED AXLE, +/- 20°  
Adjustable drawbar with 3 positions or fifth wheel

**2** MULTIPLE CHASSIS LEG POSITIONS  
Angle of departure greater than 20°  
Optimum ground clearance, more than 400 mm  
Site exit in both directions

**3** HYDRAULIC LEVELLING  
Cylinder rod protected from site damage  
Fast, precise locking with screws and nuts

**4** 2 SLEWING RADII  
Nominal radius 2.5 m, extra short radius 2 m

**5** PERMANENT STEEL BALLAST, 2 x 2450 kg  
Complete for all configurations in and out of service  
Easy to disassemble if needed

**6** EMBEDDED GENERATOR SET  
Diesel and soundproof  
Accessible at all times (easy to fill fuel tank) and can be detached

**7** TOTAL SAFETY  
Electronic and electromechanic safety devices  
Load safety device ensured by dynamometric ring

**EXCLUSIVE** REMOTE CONTROLS  
Adjustable axle, hydraulic levelling,  
generator set



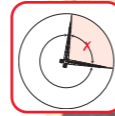
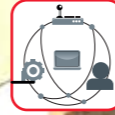
Hook height on horizontal jib: 19 m  
2 raised jib positions allowing a hook height of greater than 25 m  
Max. load: 1800 kg  
Tip load: 600 kg at 22 m

Erection in 20 min  
Erection up to 50 km/h wind speed



25 km/h\*

80 km/h\*



Joints fitted with greasing points  
Easier maintenance, longer service life

\* according to local road transport approval

